

Torbay Integrated Response to the Inspection of Services for Children and Young People with Special Educational Needs and Disabilities (SEND)

Post Inspection Meeting with the Department for Education and NHS England/ Improvement

8th February 2022

TORBAY COUNCIL

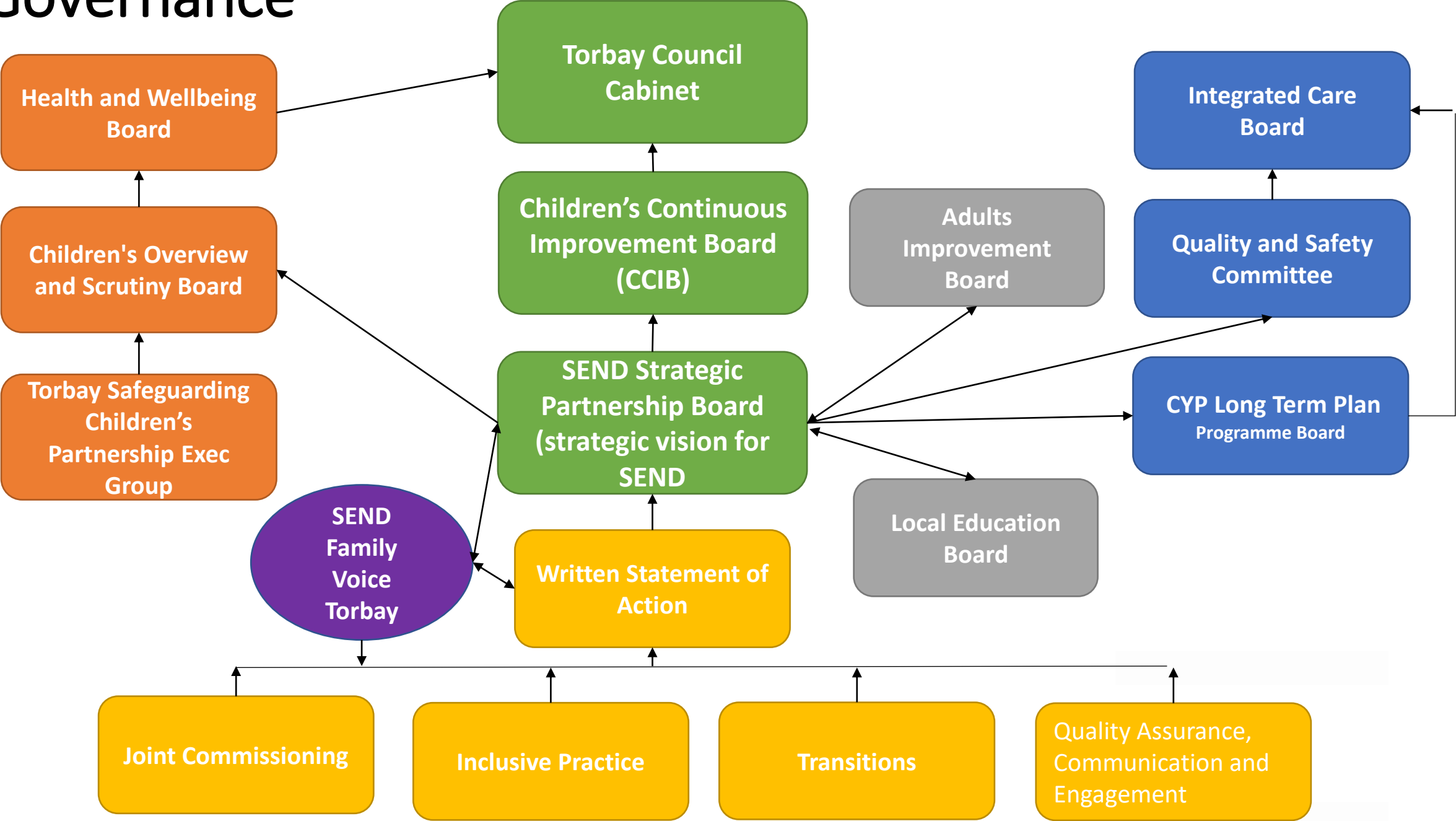


Together for
Devon
Health and care working in partnership with local communities
in Plymouth, Torbay and the rest of the county

Partnership Commitment

- We have heard the message our children and families have given us through the inspection
- We will work determinedly for a **child friendly Torbay** where children and young people with SEND and their families experience a well-planned continuum of provision from birth to 25
- We will aim high so that all children and young people with special educational needs and disabilities are able to **reach their full potential, receive the right support, at the right time**, with **choice and control** so that they can **lead fulfilling lives**.
- We will align our resources to drive sustained improvement

Governance



4 Pillars of the Improvement Programme

Co-production, Organisational & Workforce Development – Cultural Change

Joint
Commissioning

Inclusive
Practice

Transitions

Quality
Assurance,
Communication
and
Engagement

Self Assessment.

Written Statement of Action.

Strong Governance.

Strategy.

Local Offer

Responding to the Inspection Findings- Critical Success Factors



Progress and next steps

We have publicly accepted the findings of the SEND Inspection and commit, as a SEND partnership, to develop further our work with parents, carers, children and young people to ensure the support needs of the cohort with SEND are met

We are engaging with children and young people to hear their views and thoughts

We have begun a process of renewal with our relationship with existing parent / carer groups to understand themes coming from parents and identify ways forward

We are continuing to review and revise the self-evaluation to ensure that it captures more accurately and fully our evidence-based understanding of children, young people and families with SEND.

As a partnership we have taken the action to commission an independent review of our governance arrangements

Continuing to understand how we better align resources to support children and young people with SEMH, particularly when they first present, to prevent escalation into crisis and exclusion

We have taken action to ensure that the Head of the Learning Academy reviews and revises the QA systems and processes within SEND and adult services.

We will refresh the JSNA to include a specific section on SEND with key performance indicators

Radically revised the membership and terms of reference of the SEND strategic Partnership Board

Agreed increased resource and joint funding: *(2 strategic leads SEF & WSOA, project support, auditor, young researchers, increased DCO funding, support PCF, commission a young peoples voice programme)*